

# Wetting Agent

## WET-ONE

CONCENTRATED NON-IONIC WETTING AGENT  
Golf Courses—Lawns

**WET-ONE** is a specially formulated blend of non-ionic wetting agents designed to aid golf course and lawn caretakers in the correct approach to watering and maintenance problems. By lowering the surface tension of water, it allows more uniform distribution of moisture, deeper penetration of the sod and quicker drainage and dry time on the surface. Highly concentrated for economical use dilution. This product aids in creating better stands of turf with stronger root systems by allowing air, water, and nutrients to flow deeper and more freely to the root area. Time and money savings are realized by lessening the frequency of watering, and by improved uniformity in sod coverage when used in conjunction with herbicides, insecticides, or turf fungicides. Country club and golf course pros will be impressed with the decreased wilting of turf during the hot, dry months and inhibited dew formation on greens during early morning rounds.



Dilution .....	5 pints per 100 gallons of water	pH .....	6.5—7.5
DOT .....	Not regulated	Physical appearance .....	Light blue liquid
Odor .....	Odorless	Pounds / Gallons .....	8.4

# Dye & Spray Indicator

## Bio-Blue

HIGHLY CONCENTRATED DYE  
Fountain Dye—Lakes—Ponds—Spray Pattern Indicator

**BIO-BLUE** as a spray pattern indicator, acts as a dye that can be used to mark agricultural spray solutions, thereby eliminating over sprayed or under sprayed areas. **BIO-BLUE** enhances the natural beauty of ponds, lakes and fountains by giving them a beautiful blue green shade. **BIO-BLUE** is harmless to humans and wildlife and it will not disrupt fishing, swimming or irrigation.



### Directions:

Add **BIO-BLUE** to water based spray solutions at the rate of 16 ounces per 100 gallons of spray. Since turf height and color may vary, this ration may be adjusted. The use of rubber gloves is recommended.

Apply **BIO-BLUE** to ponds and lakes at the rate of between 1 and 2 gallons per acre of water 4 feet deep. Add **BIO-BLUE** from several locations to ensure even dispersal. The use of rubber gloves is recommended.

# Fertilizers

## LIQUA-GREEN

LIQUID FERTILIZER FOR TURF GRASSES

Lawns—Shrubs—Trees—Turf Grasses

**LIQUA-GREEN** is a highly sophisticated complete liquid fertilizer formulated to grow superior turf grasses. Its formulation, containing the primary nutrients of nitrogen, phosphorous and potash is compounded from high quality materials. It outperforms other products by providing the requirements for growing thick, deep green, healthy lawn grasses. Because all of the nutrients are in a liquid state, they can be absorbed by the leaves and roots of plants. The soil also becomes recharged with life supporting nutrients.



Dilution .....	1 gallon per 100 gallons of water
DOT .....	Not regulated
Odor .....	Odorless
pH .....	9.0—10.0

## MICRO-DIET II

MICRO NUTRIENT PLANT FOOD SUPPLEMENT

Flowers—Lawns—Trees

**MICRO-DIET II** is a dark viscous liquid. Generically it is considered a trace element supplement containing the essential micro-nutrients of iron, zinc, manganese, copper and sulfur. This product is fundamentally different from synthetic chelates, but it is in the same order of effectiveness. Since the lignin sulfonate complexing agent used is a natural product, this material will not cause any type of burning as with other products. It helps prevent nutrients from being “tied up” in an unavailable form by other elements in the soil. Thus it is quickly and easily taken up by plant roots and leaf cells.



Dilution .....	5 oz. per gallon of water
DOT .....	Not regulated
Odor .....	Sweet
pH .....	3.0—4.0
Physical appearance .....	Black liquid
Pounds/Gallon .....	9.2



# LAWN AND TURF

Fertilizers  
Herbicides  
Growth Retardants  
Wetting Agents

# Non-Selective: Water Based Herbicides

## WATER KLEEN

AQUATIC NON-SELECTIVE HERBICIDE-  
Lakes-Ponds-Lagoons

**WATER KLEEN** is a non-selective aquatic herbicide which is used to control floating and submerged weeds. Used as directed, this product will kill most all forms of plant growth without damage to the soil. Absorption and herbicide action is usually quite rapid with effects visible in a few days. This product is deactivated on contact with the soil.

Brookfield viscosity	5cps
Dilution	Water dilutable
DOT	Not regulated
EPA	Regulated
Odor	Mild
pH	6.0—7.0
Physical appearance	Amber liquid
Pounds/Gallon	8.4

## KLEEN-UP

CONTACT NON-SELECTIVE HERBICIDE  
Driveways-Walkways-Around Ornamental Shrubs

**KLEEN-UP** is a unique blend of weed killing ingredients that will actually replace hand picking of weeds. This herbicide is a chemical contact killer that kills most forms of green plants. It can be used to remove unwanted weeds and grasses growing in ornamental beds, among evergreens and around trees without injury to desirable woody plants or to the soil. One or two applications per season can be used as a lawn edger. Visible results seen in 12-56 hours. Non injurious to woody barked plants, becomes inactive on contact with the soil and can be used in aquatic applications.

Dilution	Water dilutable
DOT	Not regulated
EPA	Regulated
Odor	Mild
pH	6.0—7.0
Physical appearance	Amber liquid
Pounds/Gallon	8.4

## WEEDS R GONE

NON-SELECTIVE HERBICIDE  
Fence Lines-Cemeteries-Rail Lines

**WEEDS R GONE** is a concentrated, general weed killer used for the control of brush, annual or perennial weeds and grasses in non-cropland areas. It is a water soluble liquid to be mixed in water and applied as a spray. This concentrate may also be applied undiluted for basal (soil) treatment of brush. Effects may not become apparent until the product has been carried into the root zone of the weeds by moisture. The degree of control and duration of effects will vary with the amount of product applied, soil type, rainfall and other conditions.



Dilution	1 part product to 10 parts water
DOT	Not regulated
EPA	Regulated
Odor	Mild
pH	11.5-12.5
Physical appearance	Light straw liquid
Pounds/Gallon	8.3
Coverage	.750 sq ft per gallon of diluted product

## WEED FREE #1

SELECTIVE BROADLEAF HERBICIDE  
Lawns

**WEED FREE #1** is a water dilutable, selective broad-leaf herbicide designed to give complete kill of undesirable weeds without harming sensitive grasses such as St. Augustine, bent grass and buffalo grass. It can be used on all Merion grasses, Kentucky Bluegrass, Rye, Fescue, Bermuda and Zoysia grasses. This product contains a synergistic hormone blend of chemicals which are absorbed into the leaf and transferred to all other parts of the plant including the stem and roots producing a thorough and lasting kill.

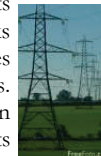
Dilution	Water dilutable
DOT	Not regulated
EPA	Regulated
Odor	Pungent
pH	9.0-10.0
Physical appearance	Dark amber liquid
Pounds/Gallon	8.4
Coverage	.1 quart covers up to 2,000 sq ft

# Solvent Based Herbicides

## TOP TO BOTTOM

NON-SELECTIVE HERBICIDE  
Fence Lines-Cemeteries-Rail Lines

**TOP TO BOTTOM** attacks plants systematically with a herbicide that soaks through the leaves and quickly passes through the sap system to kill the roots. One thorough treatment, best applied in late spring or early summer, usually lasts for an entire season. Unlike conventional non-selective herbicides that are leached out of the soil due to water solubility, this product really lasts. The soil retains residual herbicide, therefore preventing weed re-infestation.



Dilution	Ready to use
DOT	Not regulated
EPA	Regulated
Odor	Solvent
pH	N/A
Physical appearance	Dark amber liquid
Pounds/Gallon	7.4
Flash point	105—185 degrees Fahrenheit

## HIP SHOT

NON-SELECTIVE SPOT KILLER  
Parking lots-Buildings-Storage Yards

**HIP SHOT** provides rapid knockdown and kill of most weeds and unwanted vegetation. Use around fence lines, parking lots, buildings, loading ramps, storage yards, industrial plant sites and similar areas. Use to kill weeds which interfere with drainage, create a fire hazard or cause unsightly appearance. Contains a soil sterilant, which will control weeds up to one year. **CAN SPRAYS UPSIDE DOWN ONLY.**

ACTIVE INGREDIENTS	
2,4Dichlorophenoxyacetic Acid, DMA Salt	.029%
Bromacil (5-Bromo-3-sec-butyl-6-methyluracil)	.050%
OTHER INGREDIENTS	99.21%
Contains Petroleum Distillates	



Charlottesville, Virginia 22902  
Toll: 800.811.2987 Fax: 434-296-9437  
sales@sspva.com